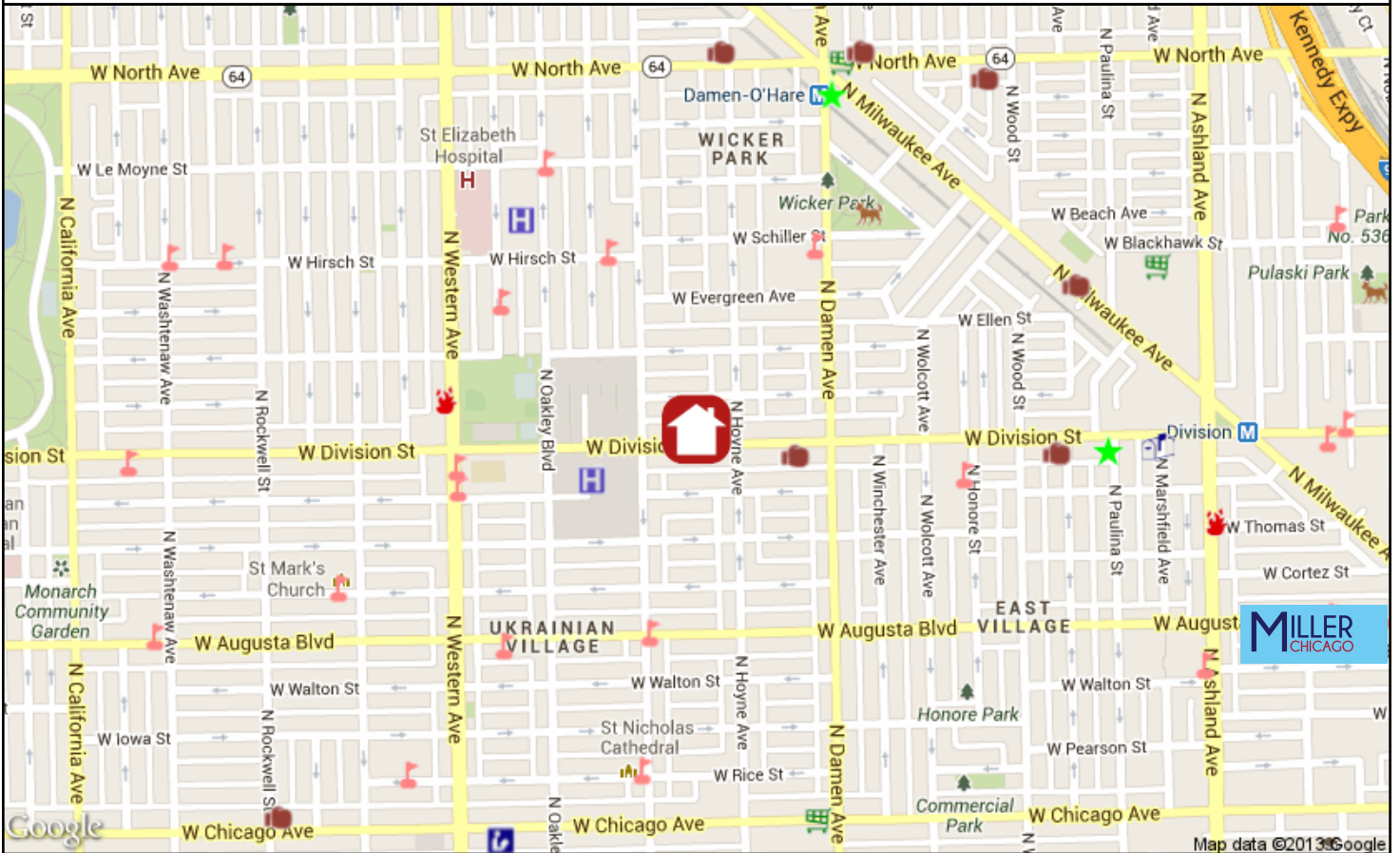


# Home-Turf Report for 2124 W Division Chicago IL



Prepared by: Andrea Miller // 312-513-8333

© Home-Turf Marketing Systems, L.L.C. // Visit [www.hometurfonline.com](http://www.hometurfonline.com) or call (800) 689-1652

**City Ward#: 32**

Alderman: Scott Waguespack  
2657 N. Clybourn, 60614, 773 248-1330

**Nearest Public High Schools:**

Clemente Achievement Academy Hs, 1147 N Western Ave, 0.3mi W  
Clemente Acd. Hs, 1147 N Western Av, 0.3mi S

**Nearest Private High Schools:**

Josephinum Acd., 1501 N Oakley Blvd, 0.4mi NW  
Puerto Rican H S, 2739 W Division St, 0.8mi W  
Holy Trinity High, 1443 W Division St, 0.8mi E

**Nearest Public Elementary Schools:**

Sabin Elem. Magnet, 2216 W Hirsch St, 0.3mi NW  
Columbus Elem., 1003 N Leavitt St, 0.3mi S

**Nearest Private Elementary Schools:**

St Helen, 2347 W Augusta Blvd, 0.4mi SW  
St Nicholas Cathedral, 2200 W Rice St, 0.5mi S

**Nearest Daycare Centers:**

Children's Learning Place, 1681 N. Milwaukee Ave., 0.6mi N

Creme de la Creme, 2230 N. Dominick St., 1.5mi NE  
Clybourn KinderCare, 1733 N. Marcey St., 1.5mi NE

**Nearest Public Library:**

Bucktown-Wicker Park, 1701 N Milwaukee Ave, 312-744-6022, 0.6mi N

**Nearest Hospital:**

Sts Mary and Elizabeth Medical Center-St. Elizabeth, 1431 N Claremont Ave, 0.4mi NW

**Nearest Major Grocery Stores:**

Dominick's, 2021 W Chicago Ave, 0.5mi S  
Jewel, 1341 N Paulina St, 0.6mi E  
Aldi, 1767 N Milwaukee Ave, 0.7mi N

**Nearest Movie Theaters:**

Regal Theaters Webster Place 11, 1471 W Webster Ave, 1.5mi NE  
Facets Cinematheque, 1517 W Fullerton Ave, 1.7mi NE

**Nearest Health Clubs:**

Nature Yoga Sanctuary, 2021 W Division, 0.1mi E  
Wicker Park Fitness, 1735 W Division St, 0.5mi E

**Nearest Starbucks:**

1588 N. Milwaukee Ave., 0.5mi N

**Nearest CTA Station:**

Damen, Blue Line, 0.5mi N

**Nearest Metra** Western, 1.1mi S

**Nearest Fire** 0.3mi W

- Starbucks
- Health Club
- Dog Park
- Day Care
- Major Grocery
- Library
- Hospital
- Post Office
- Theater
- Fire Station
- School
- CTA Station
- Metra Station
- City Park

Home-Turf Marketing Systems, L.L.C. and the users of Home-Turf assume no responsibility for any loss or impact resulting from the use of this information. No representations are made regarding the accuracy of the information provided. All data is subject to change and should be verified with local sources.

# Nearest Restaurant Report for 2124 W Division Chicago IL

Prepared by: **Andrea Miller // 312-513-8333**

© Home-Turf Marketing Systems, L.L.C. // Visit [www.hometurfonline.com](http://www.hometurfonline.com) or call (800) 689-1652

Restaurants are sorted by distance to the property in each category.

07/05/2013

## American/Continental/European

Dee's Place, 2114 W. Division St., 312-348-6117, 0.0mi E  
 Armand's Pizzeria Express, 2121 W. Division St., 773-698-7944, 0.0mi S  
  
 Delish Diner & Bakery, 2018 W. Division St., 773-276-5200, 0.1mi E  
 Caffè Gelato, 2034 W. Division St., 773-227-7333, 0.1mi E  
 Janik's Cafe, 2011 W. Division St., 773-276-7930, 0.2mi E  
 Jerry's, 1938 W. Division St., 773-235-1006, 0.2mi E  
 Gratto Pizzeria & Deli, 1341 N. Damen Ave., 773-904-7455, 0.3mi NE

## Chinese

Mirai, 2020 W. Division St., 773-862-8500, 0.2mi E  
 Bob San, 1805 W. Division St., 773-235-8888, 0.4mi E  
 Penny's Noodle Shop, 1542 N. Damen Ave., 773-394-0100, 0.5mi N  
 Skewerz, 1560 N. Damen Ave., 773-276-9805, 0.5mi N  
 Cumin, 1414 N. Milwaukee Ave., 773-342-1414, 0.5mi NE  
 Papajin, 1551 N. Milwaukee Ave., 773-384-9600, 0.5mi NE  
 Nori Chicago, 1393 N. Milwaukee Ave., 773-292-9992, 0.5mi NE

## Japanese/Sushi

Sushi Para M, 1633 N. Milwaukee Ave., 773-252-6828, 0.6mi N  
 Yuzu Sushi & Robata Grill, 1715 W. Chicago Ave., 312-666-4100, 0.8mi SE  
 Kyu Sushi, 939 N. Ashland Ave., 773-772-5985, 0.8mi SE  
 Kin Japanese Cuisine, 933 N. Ashland Ave., 773-227-7758, 0.8mi SE

Seadog Sushi Bar, 1500 W. Division St., 773-235-8100, 0.8mi E  
 Sublime Sushi, 2009 N. Damen Ave., 773-772-8744, 1.0mi N  
 Butterfly Sushi Bar & Thai Cuisine on Chicago, 1421 W. Chicago Ave., 312-492-9955, 1.0mi SE

## Thai/Vietnamese/Asian/Fusion

Thai Village, 2053 W. Division St., 773-384-5352, 0.1mi E  
 Kin Sushi and Thai Cuisine, 1134 N. Milwaukee Ave., 773-772-2722, 0.8mi E  
 Silom 12 Thai Bucktown, 1846-48 N. Milwaukee Ave., 773-489-1212, 0.8mi N  
 Thai Eatery, 2234 N. Western Ave., 773-394-3035, 1.4mi N  
 Thai Wild Ginger, 2203 N. Clybourn Ave., 773-883-0344, 1.5mi NE  
 Among Thai Cuisine, 2532 N. California Ave., 773-292-5007, 1.9mi NW

Thai Aroma, 417 W. North Ave., 312-664-3400, 2.2mi E

## Bar/BBQ/American Regional

Salud Tequila Lounge, 1471 N. Milwaukee Ave., 773-235-5577, 0.5mi NE  
  
 The Fifty/50, 2047 W. Division St., 773-489-5050, 0.1mi E  
 Moonshine Brewing Company, 1824 W. Division St., 773-862-8686, 0.4mi E  
 Mac's American Pub, 1801 W. Division St., 773-782-4400, 0.4mi E  
 Big Star, 1531 N. Damen Ave., 773-235-4039, 0.4mi NE  
 Blue Line Lounge and Grill, 1548 N. Damen Ave., 773-395-3700, 0.5mi N  
  
 Mana Food Bar, 1742 W. Division St., 773-342-1742, 0.5mi E

## Pizza

Lou Malnati's Pizzeria (Carryout and Delivery), 1520 N. Damen Ave., 773-395-2400, 0.4mi NE  
 Bobo's Market-Cafe, 1953 W. Chicago Ave., 312-226-8198, 0.6mi S  
 Lucia's Deli, 1825 W. North Ave., 773-292-9700, 0.6mi NE  
 Plazzio's, 1901 N. Western Ave., 773-227-8500, 0.9mi N  
 My Pie Pizza/Li'l Guys Deli, 2010 N. Damen Ave., 773-394-6900, 1.0mi N  
  
 Congress Pizzeria, 2033 N. Milwaukee Ave., 773-235-4455, 1.1mi NW  
  
 Lucky Vito's Pizzeria, 2171 N. Milwaukee Ave., 773-292-0101, 1.3mi NW

## Mexican/Central/South American

Folklore, 2100 W. Division St., 773-292-1600, 0.0mi E  
 Picante Taqueria, 2016 1/2 W. Division St., 773-328-8800, 0.1mi E  
 El Paraiso Tacos, 2429 W. Division St., 773-292-1002, 0.4mi W  
 Joey's Shrimp House, 1432 N. Western Ave., 773-772-1400, 0.5mi NW  
  
 Super Burrito, 1502 N. Western Ave., 773-486-4195, 0.5mi NW  
 Flash Taco, 1570 N. Damen Ave., 773-772-1997, 0.5mi N  
 Papa's Cache Sabroso, 2517 W. Division St., 773-862-8313, 0.5mi W

## Middle Eastern/Mediterranean

Chickpea, 2018 W. Chicago Ave., 773-384-9930, 0.5mi S  
 Marrakech Cuisine, 1413 N. Ashland Ave., 773-227-6451, 0.7mi E  
 Babylon Eatery, 2023 N. Damen Ave., 773-342-7482, 1.1mi N  
 Maza, 2415 N. Ashland Ave., 773-929-9600, 1.7mi NE  
 Baba Pita, 1032 W. Lake St., 312-243-3439, 1.9mi SE  
 Karyn's Raw, 1901 N. Halsted St., 312-255-1590, 1.9mi NE  
 Branko's, 1118 W. Fullerton Ave., 773-472-4873, 1.9mi NE

## Bakery/Cafe/Deli/Coffee Shop

Letizia's Natural Bakery, 2144 W. Division St., 773-342-1011, 0.0mi S  
  
 Wicker Basket Cafe, 2113 W. Division St., 773-698-8413, 0.1mi E  
 Bagel on Damen, 1252 N. Damen Ave., 773-772-2243, 0.2mi NE  
 Milk & Honey Cafe, 1920 W. Division St., 773-395-9434, 0.3mi E  
 Sweet Cakes Bakery, 901 N. Damen Ave., 773-772-5771, 0.4mi SE  
 The Wormhole Coffee, 1462 N. Milwaukee Ave., 773-661-2468, 0.5mi NE  
  
 Cafe Ballou, 939 N. Western Ave., 773-342-2909, 0.5mi SW

## Italian

Enoteca Roma Ristorante, 2144 W. Division St., 773-772-7700, 0.0mi S  
  
 Sabor Saveur, 2013 W. Division St., 773-235-7310, 0.2mi E  
 Via Carducci La Sorella, 1928 W. Division St., 773-252-2244, 0.2mi E  
  
 Greek Corner, 958 N. Damen Ave., 773-252-8010, 0.4mi SE  
 Leona's Restaurant, 1936 W. Augusta Blvd., 773-292-4300, 0.4mi SE  
  
 Andrzej Grill, 1022 N. Western Ave., 773-489-3566, 0.4mi SW  
 Mitch's & Janina Delicatessen, 1012 N. Western Ave., 773-486-0684, 0.4mi SW

# Amenity Report for 2124 W Division Chicago IL

Prepared by: Andrea Miller // 312-513-8333

© Home-Turf Marketing Systems, L.L.C. // Visit [www.hometurfonline.com](http://www.hometurfonline.com) or call (800) 689-1652

07/05/2013

## City Ward#: 32

Alderman: Scott Waguespack  
2657 N. Clybourn, 60614, 773 248-1330

## Nearest Public High Schools:

Clemente Achievement Academy Hs, 1147 N Western Ave, 0.3mi W  
Clemente Acd. Hs, 1147 N Western Av, 0.3mi W  
Wells Acd. Hs, 936 N Ashland Av, 0.7mi SE  
Noble Street Charter High, 1010 N Noble St, 1.0mi E  
Ramirez Computer Hs, 2435 N Western Av, 1.6mi N  
Best Practice High, 2040 W Adams St, 1.7mi S  
Westinghouse, 3301 W Franklin Bl, 1.8mi SW  
Crane HS, 2245 W Jackson Bl, 1.8mi S  
Westinghouse Career Academy Hs, 3301 W Franklin Blvd, 1.8mi SW

## Nearest Public Elementary Schools:

Sabin Elem. Magnet, 2216 W Hirsch St, 0.3mi NW  
Columbus Elem., 1003 N Leavitt St, 0.3mi S  
Pritzker Elem., 2009 W Schiller St, 0.3mi NE  
De Diego Elem., 1313 N Claremont Av, 0.3mi NW  
Andersen, H C Elem., 1148 N Honore St, 0.4mi E  
Erie Elem Charter School, 2510 W Cortez St, 0.5mi SW  
Chopin Elem., 2450 W Rice St, 0.6mi SW  
Von Humboldt Elem., 2620 W Hirsch St, 0.7mi W  
Roque De Duprey, 1405 N Washtenaw Av, 0.7mi W

## Nearest Private High Schools:

Josephinum Acd., 1501 N Oakley Blvd, 0.4mi NW  
Puerto Rican H S, 2739 W Division St, 0.8mi W  
Holy Trinity High, 1443 W Division St, 0.8mi E  
West Town Acd., 2021 West Fulton Ave, 1.2mi S  
Chicago Acd. For The Arts, 1010 W Chicago, 1.5mi E

## Nearest Private Elementary Schools:

St Helen, 2347 W Augusta Blvd, 0.4mi SW  
St Nicholas Cathedral, 2200 W Rice St, 0.5mi S  
Near North Montessori, 1434 W Division, 0.9mi E  
St Mary Of The Angels, 1810 N Hermitage Ave, 0.9mi NE  
St Stanislaus Kostka, 1255 N Noble St, 0.9mi E

## Nearest Public Libraries:

Bucktown-Wicker Park, 1701 N Milwaukee Ave, 312-744-6022, 0.6mi N  
  
West Town, 1625 W. Chicago Ave., 312-743-0450, 0.8mi SE

## Nearest Daycare Centers:

Children's Learning Place, 1681 N. Milwaukee Ave., 0.6mi N  
Creme de la Creme, 2230 N. Dominick St., 1.5mi NE  
Clybourn KinderCare, 1733 N. Marcey St., 1.5mi NE

## Public Transportation:

**Nearest CTA Station:** Damen, Blue Line, 0.5mi N  
**Nearest Metra** Western, 1.1mi S

## Nearest Hospitals:

Sts Mary and Elizabeth Medical Center-St. Elizabeth, 1431 N Claremont Ave, 0.4mi NW  
Norwegian American Hospital, 1044 N Francisco Ave, 1.0mi W  
Sacred Heart Hospital, 3240 W Franklin Blvd, 1.7mi SW  
John H. Stroger, Jr. Hospital of Cook County, 1901 West Harrison St., 2.1mi S  
Rush University Medical Ctr, 1653 W Congress Pkwy, 2.1mi S

## Nearest Major Grocery Stores:

Dominick's, 2021 W Chicago Ave, 0.5mi S  
Jewel, 1341 N Paulina St, 0.6mi E  
Aldi, 1767 N Milwaukee Ave, 0.7mi N  
Aldi, 800 N Kedzie Ave, 1.4mi W  
Whole Foods, 1550 N Kingsbury St, 1.5mi E

## Nearest Health Clubs:

Nature Yoga Sanctuary, 2021 W Division, 0.1mi E  
Wicker Park Fitness, 1735 W Division St, 0.5mi E  
Bucktown Fitness Club, 2100 W North Ave, 0.5mi N  
Bikram Yoga Wicker Park, 1344 N Milwaukee aVe, 0.5mi E  
Cheetah Gym, 1934 W North Ave, 0.5mi NE

## Nearest Movie Theaters:

Regal Theaters Webster Place 11, 1471 W Webster Ave, 1.5mi NE  
Facets Cinematheque, 1517 W Fullerton Ave, 1.7mi NE  
Regal Theaters City North Stadium 14, 2600 N Western Ave, 1.9mi N  
Logan Theatre, 2646 N Milwaukee Ave, 2.3mi NW  
Landmark Century Centre Cinema, 2828 N Clark St, 2.7mi NE

## Nearest Starbucks:

1588 N. Milwaukee Ave., 0.5mi N  
1701 West Division Street, 0.5mi E  
2019 West Chicago ave, 0.6mi S

## Nearest Target:

Target, 2656 N Elston Ave, 1.8mi N  
Target, 2939 W Addison St, 3.2mi N

## Nearest Drugstore:

CVS, 2418 W Division St, 0.4mi W  
Walgreens, 1372 N Milwaukee Ave, 0.5mi NE

## Nearest Home Improvement Store:

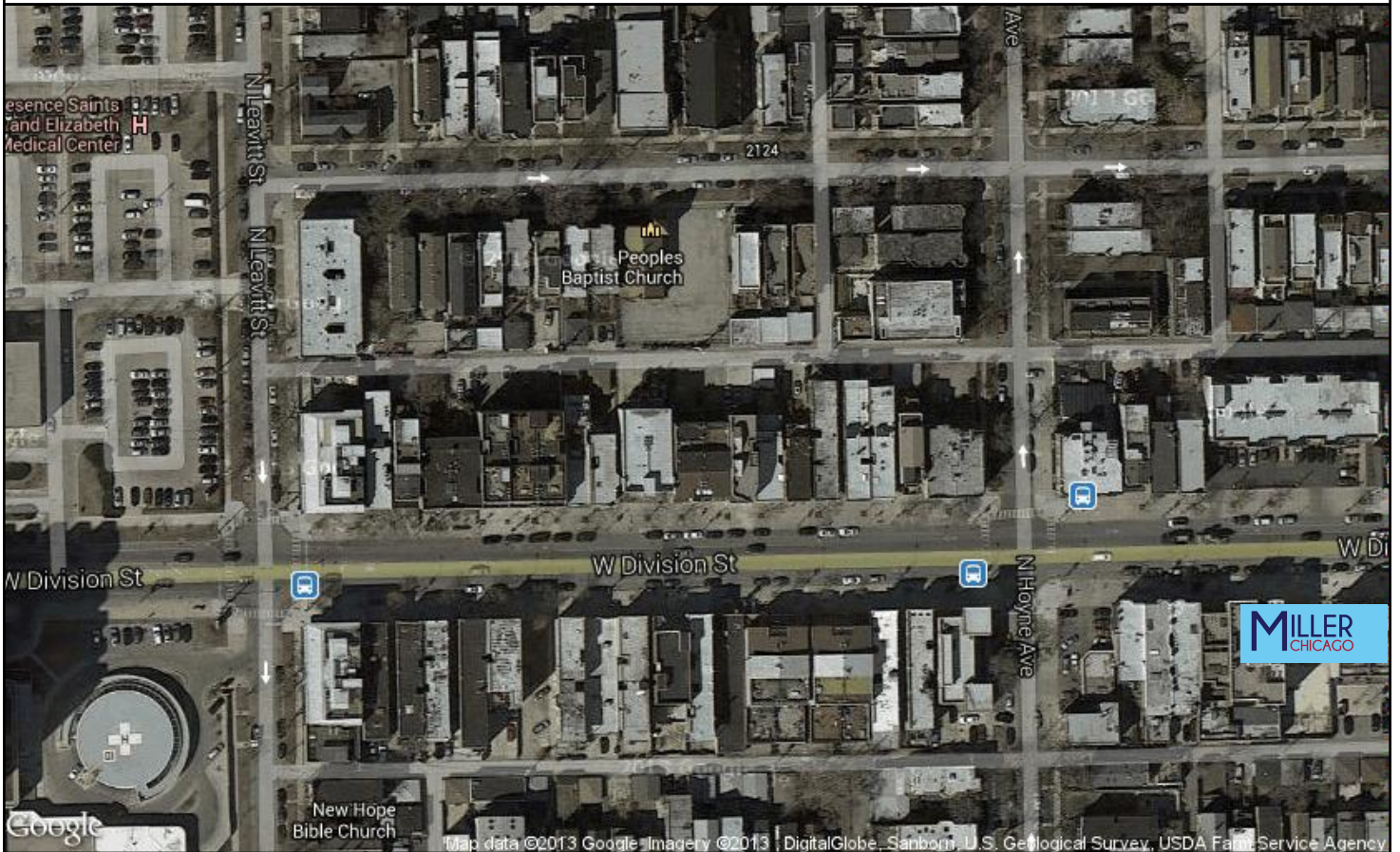
Home Depot, 1232 W North Ave, 1.3mi NE  
Home Depot, 2570 N Elston Avenue, 1.7mi N

## Public Safety:

**Nearest Fire** 0.3mi W  
**Nearest Police Station:** 937 N Wood St, 0.6mi SE



# Home-Turf Aerial Image Report for 2124 W Division Chicago IL



Prepared by: Andrea Miller // 312-513-8333

© Home-Turf Marketing Systems, L.L.C. // Visit [www.hometurfonline.com](http://www.hometurfonline.com) or call (800) 689-1652

**City Ward#: 32**

Alderman: Scott Waguespack  
2657 N. Clybourn, 60614, 773 248-1330

**Nearest Public High Schools:**

Clemente Achievement Academy Hs, 1147 N Western Ave, 0.3mi W  
Clemente Acd. Hs, 1147 N Western Av, 0.3mi W

**Nearest Private High Schools:**

Josephinum Acd., 1501 N Oakley Blvd, 0.4mi NW  
Puerto Rican H S, 2739 W Division St, 0.8mi W  
Holy Trinity High, 1443 W Division St, 0.8mi E

**Nearest Public Elementary Schools:**

Sabin Elem. Magnet, 2216 W Hirsch St, 0.3mi NW  
Columbus Elem., 1003 N Leavitt St, 0.3mi S

**Nearest Private Elementary Schools:**

St Helen, 2347 W Augusta Blvd, 0.4mi SW  
St Nicholas Cathedral, 2200 W Rice St, 0.5mi S

**Nearest Daycare Centers:**

Children's Learning Place, 1681 N. Milwaukee Ave., 0.6mi N

Creme de la Creme, 2230 N. Dominick St., 1.5mi NE  
Clybourn KinderCare, 1733 N. Marcey St., 1.5mi NE

**Nearest Public Library:**

Bucktown-Wicker Park, 1701 N Milwaukee Ave, 312-744-6022, 0.6mi N

**Nearest Hospital:**

Sts Mary and Elizabeth Medical Center-St. Elizabeth, 1431 N Claremont Ave, 0.4mi NW

**Nearest Major Grocery Stores:**

Dominick's, 2021 W Chicago Ave, 0.5mi S  
Jewel, 1341 N Paulina St, 0.6mi E  
Aldi, 1767 N Milwaukee Ave, 0.7mi N

**Nearest Movie Theaters:**

Regal Theaters Webster Place 11, 1471 W Webster Ave, 1.5mi NE  
Facets Cinematheque, 1517 W Fullerton Ave, 1.7mi NE

**Nearest Health Clubs:**

Nature Yoga Sanctuary, 2021 W Division, 0.1mi E  
Wicker Park Fitness, 1735 W Division St, 0.5mi E

**Nearest Starbucks:**

1588 N. Milwaukee Ave., 0.5mi N

**Nearest CTA Station:**

Damen, Blue Line, 0.5mi N

**Nearest Metra** Western, 1.1mi S

**Nearest Fire** 0.3mi W

-  Starbucks
-  Health Club
-  Dog Park
-  Day Care
-  Major Grocery
-  Library
-  Hospital
-  Post Office
-  Theater
-  Fire Station
-  School
-  CTA Station
-  Metra Station
-  City Park

**The address of interest is in the center of this image.**

Home-Turf Marketing Systems, L.L.C. and the users of Home-Turf assume no responsibility for any loss or impact resulting from the use of this information. No representations are made regarding the accuracy of the information provided. All data is subject to change and should be verified with local sources.

## Half-Mile Profile for 2124 W Division Chicago IL

Prepared by: Andrea Miller // 312-513-8333

© Home-Turf Marketing Systems, L.L.C. // Visit [www.hometurfonline.com](http://www.hometurfonline.com) or call (800) 689-1652

07/05/2013

Current Year	2010	Current Year	% Change
Households	9,014	9,183	2 %
% Owner Households	32 %	30 %	-6 %
% Renter Households	68 %	70 %	3 %
% Household Families with Children	10 %	36 %	260 %
Median Years in Residence	4	2	-50 %
Market Stability (% HH in residence 5+ years) *	40 %	16 %	-60 %
Housing Turnover Rate *	28 %	21 %	-22 %
Residential Population	18,443	18,504	0 %
% Group Population (college + military)	1 %	1 %	0 %
% Married Population	26 %	27 %	4 %
% Population with College Degree	54 %	58 %	7 %
% Population Age 0-14	10 %	11 %	10 %
% Population Age 15-24	13 %	12 %	-8 %
% Population Age 25-44	55 %	53 %	-4 %
% Population Age 45-64	15 %	15 %	0 %
% Population Age 65+	7 %	8 %	14 %
Median Population Age	30	31	3 %
% Household Income \$0-14,999	12 %	11 %	-8 %
% Household Income \$15,000-49,999	27 %	25 %	-7 %
% Household Income \$50,000-99,999	30 %	31 %	3 %
% Household Income \$100,000-149,999	13 %	14 %	8 %
% Household Income \$150,000+	13 %	15 %	15 %
Median Household Income	\$ 62,900	\$ 66,476	6 %

\* These values are estimates based on the 2000 Census, the most recent data available.