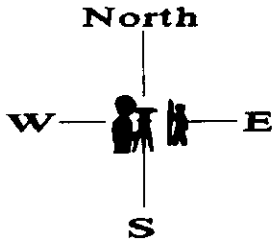


PLAT OF SURVEY

by
Michael J. Emmert Surveys, Inc.

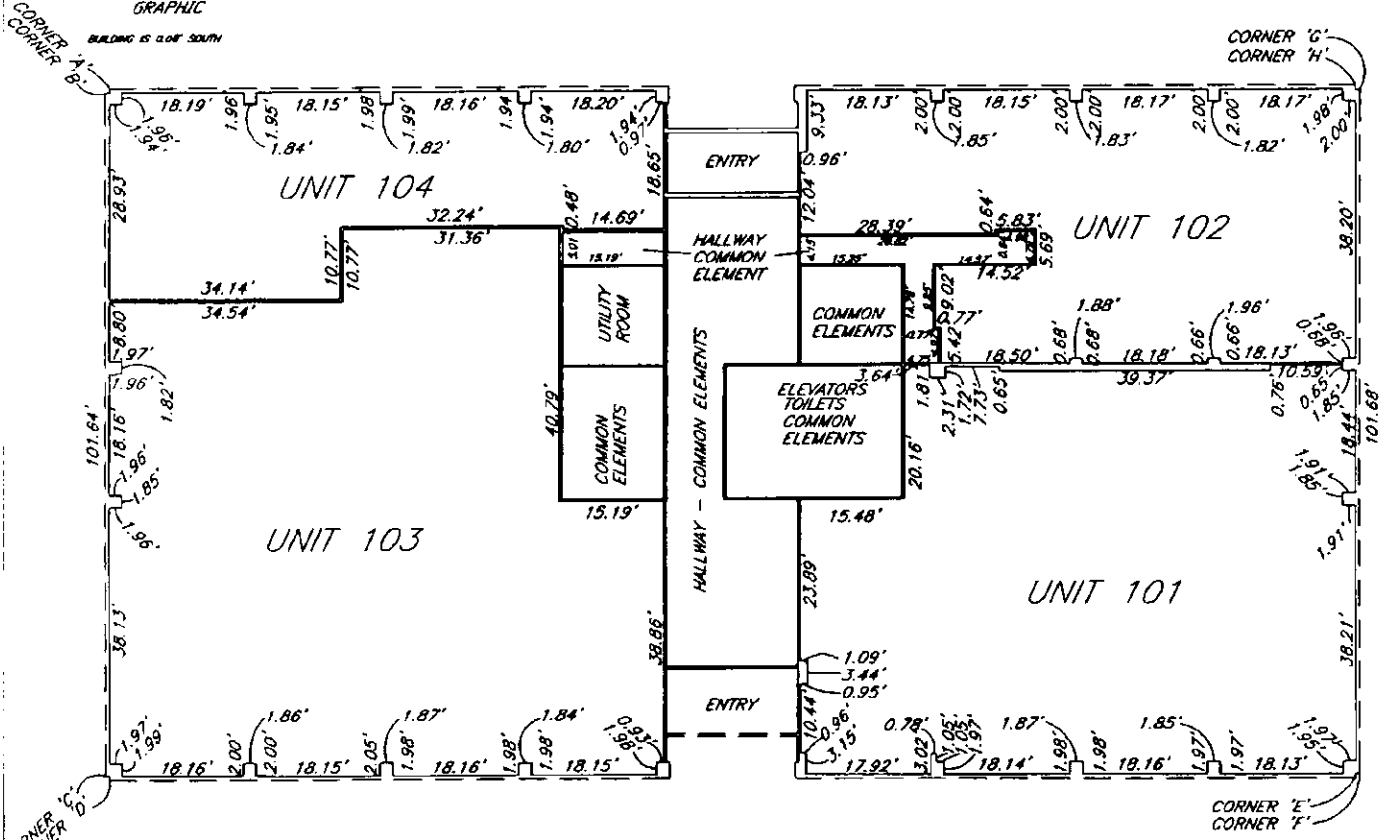


HORIZONTAL PLANES SHOWN HEREON ARE MEASURED FROM TOP OF FINISHED FLOOR TO BOTTOM OF SUSPENDED CEILING.
UPPER ELEVATION OF UNITS ON THIS PAGE IS + 634.68 FEET
LOWER ELEVATION OF UNITS ON THIS PAGE IS + 626.15 FEET

VERTICAL PLANES SHOWN HEREON ARE MEASURED FROM, TO AND ALONG INTERIOR FINISHED FACE OF EXTERIOR WALLS, TO AND ALONG INTERIOR FINISHED FACE OF INTERIOR WALLS.

ALL EXTERIOR WALLS ARE 0.58 FEET THICK (EXCEPT AS NOTED)
ALL INTERIOR WALLS ARE 0.32 FEET THICK (EXCEPT AS NOTED)

ELEVATIONS SHOWN HEREON ARE IN RELATION TO CITY OF PARK RIDGE DATUM



	10	11	12	13	14	15	16	17	18	19	20
1 AND	21	22	23	24	25	26	27	28	29	30	31
2 AND	32	33	34	35	36	37	38	39	40	41	42
3 AND	43	44	45	46	47	48	49	50	51	52	53
4 AND	54	55	56	57	58	59	60	61	62	63	64
5 AND	65	66	67	68	69	70	71	72	73	74	75
6 AND	76	77	78	79	80	81	82	83	84	85	86
7 AND	87	88	89	90	91	92	93	94	95	96	97
8 AND	98	99	100	101	102	103	104	105	106	107	108
9 AND	109	110	111	112	113	114	115	116	117	118	119
10 AND	120	121	122	123	124	125	126	127	128	129	130

1030 W. HIGGINS
CONDOMINIUM
SPECIAL AMENDMENT TO
EXHIBIT A
FIRST FLOOR
PAGE 2 OF 4



State of Illinois
County of Du Page) ss.

Michael J. Emmert Surveys, Inc. does hereby certify that we have prepared the plat thereon drawn and that said plat correctly represents said property. We further certify that the walls of said property and plumb and that there are no encroachments of buildings or structures from said land nor overlap of building or structures onto said land, except as noted. This Survey conforms to the requirements of 765 Ilsc 605/5 for a Condominium Survey.
Dated this 24th. day of July, 2007 - Assented September 28, 2009

Michael J. Emmert Surveys, Inc
185 East Vallette Street
Elmhurst, Illinois 60126
Office 630-516-0383
Fax 630-516-0387

By: _____
Professional Illinois Land Surveyor No. 2499

**MICHAEL J. EMMERT
SURVEYS, INC.**

185 EAST VALLETTE STREET
ELMHURST, ILLINOIS 60126
OFFICE 630-516-0383
FAX 630-516-0387

UNIT 104 - 1,981 SQ. FT.

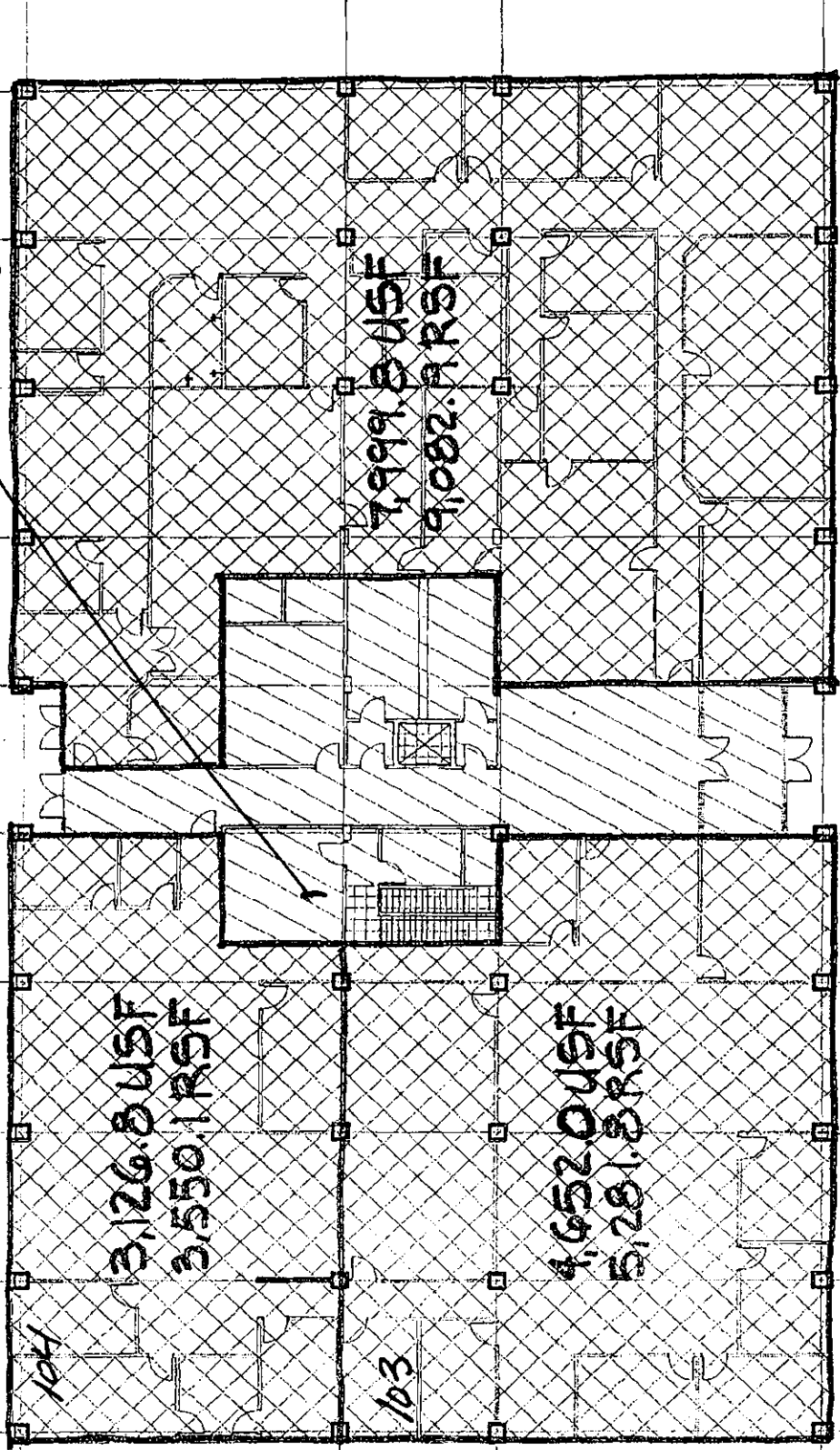
LCE 365 - 288 SQ. FT.

103 PLUS 104 PLUS HALL AND INTERIOR WALLS (NOT PERIMETER)
7,683 SQ. FT.

Prior to Subdivision

1030 Higgins - 1st Floor

Utility Room



104

3,126.8 USF
3,550.1 RSF

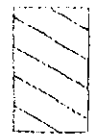
103

4,652.0 USF
5,281.8 RSF

7,999.8 USF
9,082.9 RSF



Non-Rentable Area



Building Common Area



Office Area

3550.1 Rentable "
5281.8 "

8,831.9

TOTAL Rentable Excluding Utility Room